

Chase Village

1	General
<p>Incorporated in 1969, Chase has a total land area of 3.75 square km (2006 Census). By highway the Village is 56 km east of Kamloops. Chase is in the Thompson-Nicola Regional District.</p>	

2	Population Estimates				Age Distribution				
Annual Estimates					2011 Census			% Distribution, 2011 *	
Year	Chase	% Change Prev. Year	BC	% Change Prev. Year	Chase	Male	Female	Chase	BC
2007	2,409	n/a	4,309,632	n/a	All ages	1,200	1,290	100.0	100.0
2008	2,469	2.5	4,384,047	1.7	0 - 14	170	165	13.6	15.4
2009	2,481	0.5	4,459,947	1.7	15 - 24	120	100	8.8	12.6
2010	2,487	0.2	4,529,647	1.6	25 - 44	190	200	15.6	26.3
2011	2,497	0.4	4,573,321	1.0	45 - 64	340	415	30.1	30.0
					65 +	385	410	32.1	15.7

Source: Statistics Canada (as of July 1, includes estimate of Census undercount)

* based on published totals, both sexes

2006 Census Profiles can be found on our Website at <http://www.bcstats.gov.bc.ca/census.asp>

3	Selected Census Characteristics						
			Chase			British Columbia	
Characteristics	2001	2006	% Change	% Change	2001	2006	
Population	2,460	2,409	- 2.1	5.3	3,907,738	4,113,487	
Population (by citizenship)	2,460	2,370	- 3.7	5.3	3,868,875	4,074,385	
Non-immigrant	2,275	2,160	- 5.1	2.9	2,821,870	2,904,240	
Immigrant	185	205	10.8	10.8	1,009,820	1,119,215	
Labour force (15+ yrs.)	950	1,035	8.9	8.1	2,059,950	2,226,380	
Employees	765	860	12.4	9.2	1,715,600	1,873,050	
Self-employed	150	155	3.3	7.4	291,455	313,000	
Participation rate [ppt.=percentage points]	47.6%	51.1%	3.5 ppt.	0.4 ppt.	65.2%	65.6%	
Unemployment rate	13.2%	8.2%	-5.0 ppt.	-2.5 ppt.	8.5%	6.0%	
Total population 25 to 64 years	1,040	1,090	4.8	6.5	2,144,050	2,284,465	
No certificate, diploma or degree	325	245	- 24.6	- 40.1	471,470	282,200	
High school certificate or equivalent	265	270	1.9	27.7	462,925	591,275	
Apprenticeship/trades certificate or diploma	140	245	75.0	- 7.4	295,180	273,450	
College, CEGEP or other cert. or diploma	210	195	- 7.1	11.3	401,760	447,005	
University certificate, diploma or degree	100	130	30.0	34.7	512,715	690,535	
Bachelor's degree	35	40	14.3	23.0	282,800	347,715	
Census families	735	765	4.1	6.9	1,086,030	1,161,420	
Lone-parent families	120	105	- 12.5	4.0	168,420	175,165	
Households	1,090	1,085	- 0.5	7.1	1,534,335	1,643,150	
1-family households	720	755	4.9	6.1	1,012,925	1,074,850	
Multi-family households	-	-	-	18.4	35,050	41,510	
Non-family households	360	325	- 9.7	8.3	486,355	526,785	
Median Income (2000 & 2005)	\$ 15,434	\$ 21,919	42.0	12.5	\$ 22,095	\$ 24,867	
Males	\$ 24,391	\$ 29,289	20.1	9.0	\$ 28,976	\$ 31,598	
Females	\$ 12,916	\$ 17,623	36.4	14.0	\$ 17,546	\$ 19,997	
Median Family Income (2000 & 2005)	\$ 40,560	\$ 51,798	27.7	20.0	\$ 54,840	\$ 65,787	
Economic Families	735	760	3.4	6.5	1,044,850	1,112,810	
2001 Incidence, low income 2006 Prevalence, low income	16.8%	5.2%	-11.6 ppt.	-0.6 ppt.	13.9%	13.3%	
Unattached persons, 15+	400	365	- 8.8	4.7	576,825	603,880	
Incidence, low income	47.2%	24.3%	-22.9 ppt.	-1.4 ppt.	38.1%	36.7%	
Population in private hh.	2,460	2,350	- 4.5	5.1	3,785,270	3,978,215	
Incidence, low income	23.5%	9.8%	-13.7 ppt.	-0.5 ppt.	17.8%	17.3%	
Dwellings	1,090	1,085	- 0.5	7.1	1,534,335	1,643,150	
Owned	805	910	13.0	12.5	1,017,485	1,145,045	
Rented	285	180	- 36.8	- 3.6	512,360	493,995	
Average gross rent	\$ 578	\$ 616	6.6	10.4	\$ 750	\$ 828	
Average owners' payments	\$ 563	\$ 587	4.3	17.1	\$ 904	\$ 1,059	
Avg. value, owned dwell.	\$ 115,582	\$ 205,599	77.9	81.5	\$ 230,645	\$ 418,703	

Source: Statistics Canada. Notes: incomes are for 2005 and 2000; rent/owner's payments are restricted to non-farm, non-reserve private dwellings.

Chase Village

4		Labour Force by Industry (NAICS)					
		Chase			BC	% Distribution, 2006	
Industry		2001	2006	% Change	% change	Chase	BC
Total labour force		950	1,030	8.4	8.1	100.0	100.0
Industry - Not applicable		30	-	- 100.0	- 26.6	-	1.5
All industries (Experienced LF)		920	1,030	12.0	8.9	100.0	98.5
111-112 Farms		25	10	- 60.0	5.2	1.0	1.8
113 Forestry and logging		65	55	- 15.4	- 10.0	5.3	1.0
114 Fishing, hunting and trapping		-	-	-	1.3	-	0.2
1151/2 Support activities for farms		-	-	-	11.3	-	0.1
1153 Support activities for forestry		30	-	- 100.0	- 21.5	-	0.3
21 Mining and oil and gas extraction		-	10	-	42.6	1.0	0.9
22 Utilities		-	-	-	- 3.4	-	0.5
23 Construction		45	95	111.1	39.9	9.2	7.5
31-33 Manufacturing		115	150	30.4	- 2.7	14.6	8.5
311 Food manufacturing		20	-	- 100.0	3.6	-	1.0
321 Wood product manufacturing		65	110	69.2	- 16.1	10.7	1.7
322 Paper manufacturing		10	10	-	- 13.5	1.0	0.6
41 Wholesale trade		40	35	- 12.5	11.6	3.4	4.1
44-45 Retail trade		115	195	69.6	6.9	18.9	11.2
441 Motor vehicle and parts dealers		-	20	-	9.0	1.9	1.1
445 Food and beverage stores		65	80	23.1	8.4	7.8	2.9
448 Clothing & clothing accessories		-	-	-	9.2	-	1.1
452 General merchandise stores		10	-	- 100.0	6.5	-	1.2
48-49 Transportation & warehousing		35	40	14.3	0.6	3.9	5.2
51 Information and cultural industries		15	10	- 33.3	- 5.3	1.0	2.6
52 Finance and insurance		25	10	- 60.0	4.5	1.0	3.8
53 Real estate & rental/leasing		15	20	33.3	22.1	1.9	2.3
54 Prof'sonal, scientific & tech. serv.		15	20	33.3	18.6	1.9	7.3
55 Mgmt. of companies/ent'prises		-	-	-	126.6	-	0.1
56 Admin+support, waste mgmnt srv.		30	10	- 66.7	20.4	1.0	4.4
61 Educational services		25	40	60.0	9.2	3.9	6.9
62 Health care and social assistance		80	95	18.8	6.5	9.2	9.6
71 Arts, entertainment and recreation		15	30	100.0	11.3	2.9	2.3
72 Accommodation and food services		75	80	6.7	7.7	7.8	8.1
721 Accommodation services		25	-	- 100.0	2.5	-	1.7
722 Food services & drinking places		45	75	66.7	9.2	7.3	6.4
81 Other services (excl. public admin.)		90	75	- 16.7	11.8	7.3	4.9
91 Public administration		70	55	- 21.4	- 2.0	5.3	5.0
Special Aggregations	Agriculture, Food and Beverage	45	10	- 77.8	5.8	1.0	2.9
	Fishing and Fish Processing	-	-	-	- 3.3	-	0.5
	Logging and Forest Products	170	170	-	- 14.7	16.5	3.7
	Mining and Mineral Products	10	35	250.0	17.1	3.4	2.1

Source: Statistics Canada. Industry according to NAICS version used in each census. Unpublished data.

5		Business Locations- Number of Firms by Employment Size Range								
		Firms with no employees		Firms with employees		% change		Thomp-Nic RD		
		Thomp-Nic RD	BC	Thomp-Nic RD	BC	Thomp-Nic RD	1 to 19	20 to 49	50-199	200 Plus
2008		4,344	185,879	4,984	175,003	-	4,371	431	161	21
2009		4,429	186,541	5,015	176,124	0.6	4,382	453	159	21
2010		4,644	194,349	5,147	175,913	2.6	4,502	445	177	23
2011		4,602	195,290	5,006	173,589	- 2.7	4,362	452	173	19

Source: Business Register, Statistics Canada. In some areas, boundary changes/geocoding changes may cause large changes.

6		Municipal Residential Taxes and Charges on a Representative House					
		Chase					
		House Value		Taxes & Charges			
Year	\$	% change	\$	% change			
2008	225,031		2,512				
2009	224,502	-0.2	2,533	0.8			
2010	214,165	-4.6	2,275	-10.2			
2011	214,483	0.1	2,202	-3.2			
2012	212,116	-1.1	2,423	10.0			

Year	House Value	Taxes & Charges
2008	100	2,512
2009	99.5	2,533
2010	96.5	2,275
2011	96.5	2,202
2012	95	2,423

Source: Ministry of Community, Sport & Cultural Development http://www.cd.gov.bc.ca/lgd/infra/statistics_index.htm (No RD level figures)

Chase Village

7	Values of Building Permits									Year
	Residential				Non-Residential			Total		
	Number of Units		Value \$'000		Value \$'000			Value \$'000		
Year	Chase	BC	Chase	BC	Chase	BC	Chase	BC	Year	
2007	39	40,932	4,932	8,611,723	125	3,932,968	5,057	12,544,691	2007	
2008	23	30,110	3,172	6,899,289	1,221	3,677,866	4,393	10,577,155	2008	
2009	1	18,607	262	4,491,075	152	3,138,810	414	7,629,885	2009	
2010	-	28,984	-	6,705,888	-	3,017,921	-	9,723,809	2010	
2011	-	25,745	-	6,113,406	-	3,136,361	-	9,249,767	2011	

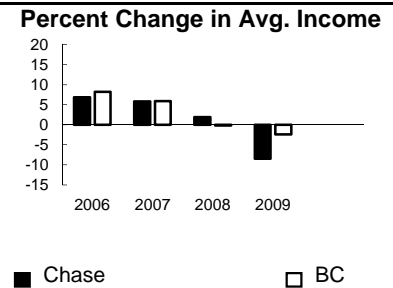
Source: Statistics Canada

2010 Included in RD

Note: Detailed non-residential permits data can be found on our Website: www.bcstats.gov.bc.ca

A dash can indicate a nil report, a value of less than \$500, or non-reporting. P indicates 'preliminary'.

8	Personal Taxation Statistics					Percent Change in Avg. Income	
	Total Income of All Returns						
	Year	All Returns (number)	Average Income (\$)		% Change avg. income		
	Chase	BC	Chase	BC	Chase	BC	
2005	3,590	3,154,090	26,555	35,601	n/a	n/a	
2006	3,870	3,165,750	28,382	38,523	6.9	8.2	
2007	3,690	3,287,750	30,028	40,802	5.8	5.9	
2008	4,010	3,383,640	30,603	40,736	1.9	-0.2	
2009	3,640	3,406,860	28,000	39,754	-8.5	-2.4	

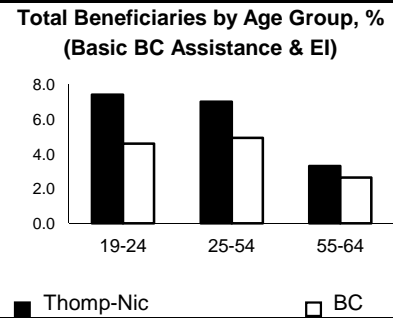


Taxation data available at: <http://www.bcstats.gov.bc.ca/data/dd/income.asp>

9	Source of Total Income 2009				% Distribution, Total Income							
	Chase		BC									
	\$Thousands	% of Total	% of Total									
Employment	48,896	48.0	63.7	Employment	48	64	Investment	9	10	Other	8	10
Pension	29,144	28.6	13.8	Pension	29	14	Self-Emply'd	3	3	Tax Exempt	2	2
Investment	8,565	8.4	9.8	Investment	9	10						
Self-Employed	2,972	2.9	5.3	Self-Emply'd	3	3						
Other	8,027	7.9	5.3	Other	8	10						
Tax Exempt	4,302	4.2	2.0	Tax Exempt	4	2						
Total	101,920	100.0	100.0	Total	102	100						

Source: Canada Revenue Agency. Areas are defined by postal codes and may not match municipal boundaries.

9	Dependency on the Safety Net						Total Beneficiaries by Age Group, % (Basic BC Assistance & EI)			
	Percentage of Population by Age Receiving Benefits - September 2009									
	Age Group	BC Basic* Income Assistance Recipients (%)		Employment Insurance Beneficiaries (%)		Total of BC Basic Income Assistance & EI Beneficiaries (%)		19-24	25-54	55-64
Thomp-Nic		BC	Thomp-Nic	BC	Thomp-Nic	BC				
Under 19	4.8	2.7	3.7	2.6	7.4	4.6	7.4	4.6	3.3	2.6
19-24	4.0	2.1	4.3	3.1	7.0	4.9	7.0	4.9	3.3	2.6
25-54	2.9	1.9	2.6	2.0	3.3	2.6	3.3	2.6	6.2	4.4
55-64	0.7	0.7	3.8	2.8	6.2	4.4	6.2	4.4		
19-64	2.6	1.7								



* On temporary assistance only. Excluded are those on Continuous Assistance, aboriginals living on reserve, seniors/OAS, & children living with relatives.

Source: BC Stats (using administrative files from the BC Ministry of Housing & Social Development, and Human Resources & Social Development Canada)

Note: EI Beneficiaries reports now include regular, fishing and employment benefits, work sharing and support measures. The reports exclude sickness, maternity and parental benefits.

10	Business Formations and Failures								
	Incorporations			Bankruptcies					
	Number		Year	Kamloops		Thompson/Okanagan DR		BC	
Chase	BC	Business		Consumer	Business	Consumer	Business	Consumer	
2007	13	34,036	2005	28	187	n.a.	n.a.	786	8,168
2008	3	30,085	2006	21	154	120	913	585	7,020
2009	5	26,431	2007	20	147	97	874	470	6,651
2010	2	30,305	2008	15	142	92	1,014	454	7,293
2011	2	30,844	2009	17	222	66	1,573	380	10,639

Source: BC Ministry of Finance

Source: Office of the Superintendent of Bankruptcy, Government of Canada

Incorporations are counted in municipality of the registered office address which may differ from the actual business location.

Note: Bankruptcy is by urban postal code forward sortation area and is counted where it is filed.